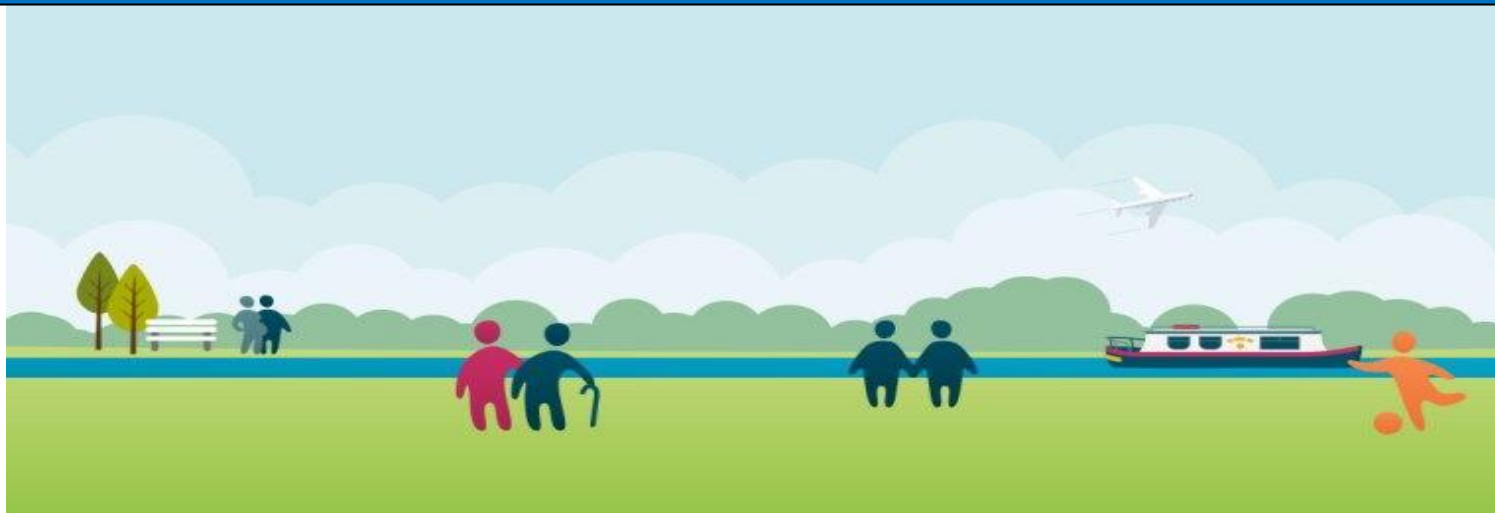


2017-
2018

SAB Annual Report



 @hillingdonSAB
 www.hillingdonsab.org.uk

Andrea Nixon
Safeguarding Adults Board
2017 -2018

Foreword: Independent Chair Steve Ashley



Welcome to the annual report of the Adult Safeguarding Board. The Board is a statutory requirement in every local authority area. I am the chair of the Board and I am independent of the agencies in Hillingdon. The Board brings together all those agencies that are involved in safeguarding adults, as well as voluntary bodies and private sector companies providing services. It ensures that there is a coordinated approach to protecting and supporting adults at risk of abuse or neglect. This may be young adults who need support and protection through to our older people. The range of issues faced by adults at risk of abuse or neglect in Hillingdon is wide. From mental health, drug and alcohol issues to elder abuse, agencies need to be resourced and have in place processes that enable them to respond to those at risk of abuse or neglect and provide them with the support and protection they need to enjoy their lives.

This report sets out the work conducted by agencies in Hillingdon to safeguard adults and describes how those agencies have worked together to deal with some major issues.

One of the primary responsibilities of the Board is to hold agencies to account. To do this, we have improved our performance management processes and begun to develop an audit process to ensure that the quality of the services being provided is at the right level.

We have strengthened our ties with Heathrow airport to ensure we understand the particular issues that having one of the world's busiest airports on your patch can create. Our work with the Border Agency and Heathrow management has seen better joint working and a clearer understanding of responsibilities.

Foreword: Independent Chair Steve Ashley

The Board held a successful seminar on sepsis. Sepsis kills 44 000 people a year and the elderly and small children are at greatest risk. The seminar was attended by professionals across both the private and public sectors and raised awareness. The seminar is acting as the catalyst for further training.

The Board has also developed a training programme that is specifically designed for those professionals that work with adults at risk of abuse or neglect, and is being well supported by companies whose staff work with older people. We have consolidated this work by developing short webcasts in partnership with students at Brunel University. This enables those on the front line to understand how agencies can help each other protect the most vulnerable.

These are just some examples of the current work of the Board. I am pleased to say that partners are working well together and despite the continued financial pressures, are performing well.

This report is a window into the work that is being conducted in Hillingdon. Our website provides more detailed performance information and statistical analysis. We also have a social media presence on Twitter.

Thank you for taking the time to read this report. If there are any issues raised on which you would like to receive further information, please contact us via the website.

There is a high level of interest among elected members in Hillingdon on all matters related to adult safeguarding. It features prominently among members' enquiries and in member development activity.

The challenge for us all in partnership is making sure, within finite resources that we are able to identify areas of risk and apply the most appropriate measures to ensure our most vulnerable adults are properly safeguarded, and to exercise due diligence in so doing.

I am pleased with the progress made in the last year in the improvement of our performance management processes, and through the introduction of an audit process to ensure services are delivered to the right level. However, we should never forget that we are collectively, only as good as the day to day living experience of our vulnerable residents. There is never room for complacency which is why I frequently challenge both LBH colleagues and partners to ensure we are robust in our approach to adult safeguarding which makes a real difference.

Cllr Philip Corthorne, West Ruislip Ward Councillor & Cabinet Member for Social Services, Housing, Health and Wellbeing

Hillingdon Safeguarding Adults Board Governance & Accountability Arrangements

The Care Act 2014 requires all local authorities to set up Safeguarding Adults Boards (SABs) with other statutory partners, including the Police and Clinical Commissioning Group (CCG).

The Hillingdon Safeguarding Adults Board continues to work with partners to embed the requirements of the overarching Care Act to:

- Assure that local safeguarding arrangements are in place as defined by the Act.
- Prevent abuse and neglect, where possible.
- Provide timely and proportionate responses when abuse or neglect is likely or has occurred.

The legal framework for the Care Act 2014 is supported by statutory guidance on how the Care Act works in practice.

The guidance has statutory status, which means that there is a legal duty to have regard to it when working with adults with care and support needs and carers.

The SAB takes the lead for adult safeguarding across Hillingdon to oversee and co-ordinate the effectiveness of the safeguarding work of its members and partner organisations.

Through common membership, there are links to Multi Agency Public Protection arrangements (MAPPA), the Domestic Abuse Multi Agency Risk Assessment Conference (DA MARAC) and the Community Risk MARAC (CR MARAC).

Over the last year the Board has been well supported by elected members. The lead member for Adult Safeguarding attends the Executive Board meeting. The SAB is now closely allied to the Health and Well Being Board and the Care Governance Board.

Elected Members have taken a lead in safeguarding issues. Considerable work has been undertaken in the community supporting front line professionals. This level of engagement by Members is essential in the process of continuous improvement.

Hillingdon Safeguarding Adults Board Structure Chart

The Hillingdon SAB has three subcommittees that support the Board in meeting its objectives that are set out in the business plan. The three subcommittees of the SAB are held regularly throughout the year and provide a report to each SAB Operational Board. The Performance and Quality subcommittee also present emerging themes to the SAB Executive Committee.

Safeguarding Adults Board

SAB Executive

Joint Strategic Safeguarding and Trafficking

This sub-committee is unique to Hillingdon SAB and LSCB. The aim is to continue to strengthen the partnership that we have with Heathrow Airport, Her Majesty's Immigration Removal Centre and the Local Authority. Work is continuing on developing robust referral pathways regarding vulnerable adults arrive at Heathrow.

There is improved engagement between UK Border Force and Adult Mental Health services. The SAB Business Unit attends safeguarding meetings that are held monthly at H.M.Colnbrook Immigration and Removal Centre. The SAB has requested that data reported at these meetings be shared with the Board. This request has been made to the Home Office and we still await a response.

Safeguarding Adults Review

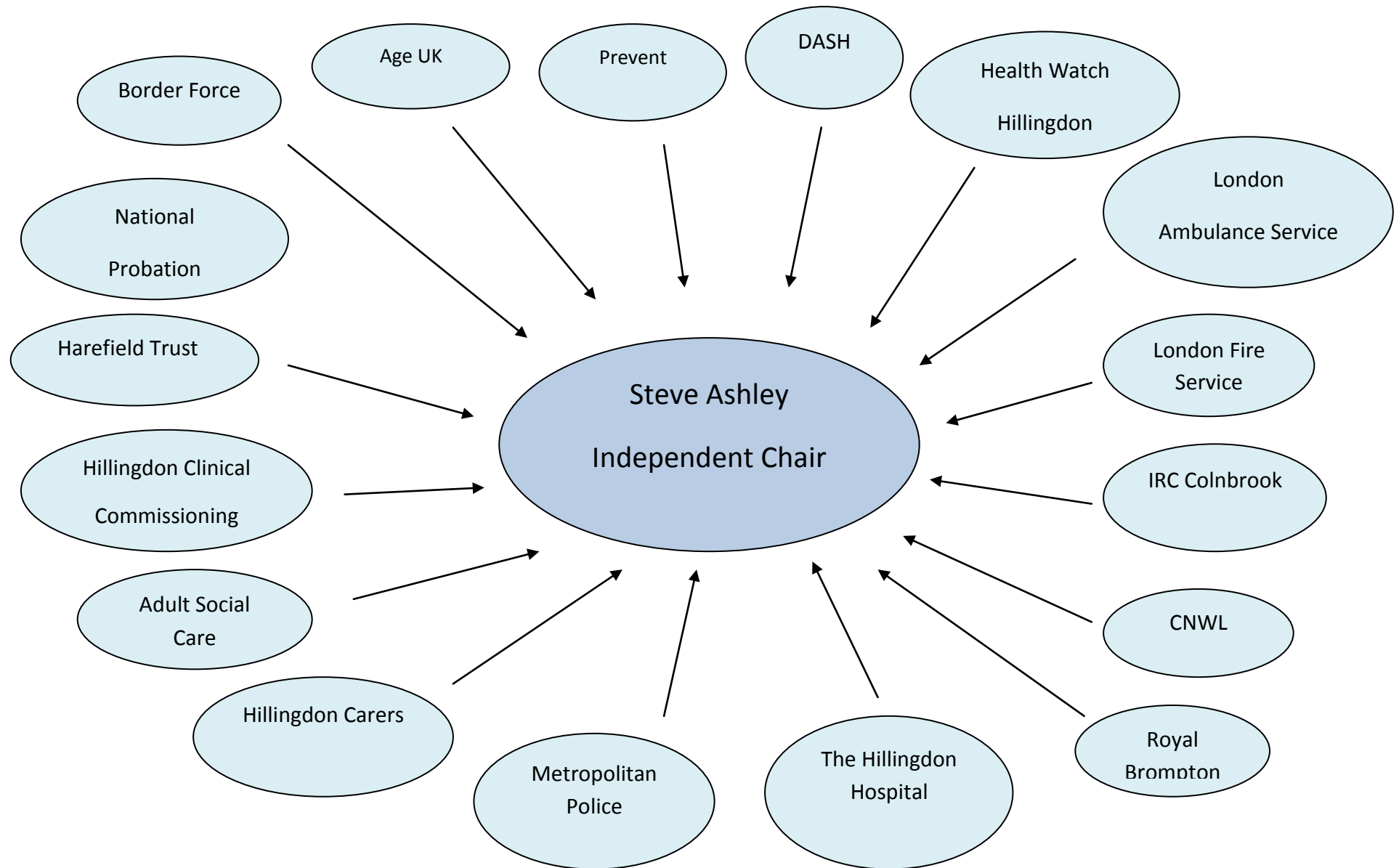
Responsible for commissioning an independent review when an adult at risk dies, or is significantly harmed and for ensuring that learning from SARs is implemented and publicised.

Performance and Quality Assurance

Responsible for the production of performance data on safeguarding across partner agencies in the form of a dashboard, which enables partner members to collectively interrogate information, influence service improvements and identify what is working well.

The development and scrutiny of the dashboard has led to agency specific 'deep dives' in order to provide dialogue to support the data.

Hillingdon Safeguarding Adults Board Partner Members



Strategic Boards That are Linked to the Safeguarding Adults Board

Local Safeguarding Children Board:

The Local Safeguarding Children Board is no longer a statutory requirement. However, there is a requirement for statutory partners, Police, CCG and the Local Authority to ensure that safeguarding arrangements are in place. This year there has been a focus on the two boards working more closely together, which has included joint training events and joint membership of the Joint Strategic Safeguarding and Trafficking subcommittee.

Safer Hillingdon Partnership:

The Community Safety Partnership Board is required by law to conduct and consult on an annual strategic assessment of crime, disorder and anti-social behaviour, substance misuse and re-offending within the borough. The findings are then used to produce the partnerships Community safety plan.

Health and Wellbeing Board:

The Health and Wellbeing Board is a statutory requirement for local authorities. The board brings together the NHS, the Local Authority and Health Watch to jointly plan how best to meet local health and care needs in order to improve the health and wellbeing of the local population, reduce health inequalities and commission services accordingly.

Domestic Abuse Steering Executive:

The domestic abuse executive board brings together statutory and non statutory agencies in order to ensure that the Safer Hillingdon Partnership's Domestic Abuse strategy is implemented.

Local Demographics

Life expectancy in Hillingdon for both men and women is higher than the England average.

However, life expectancy is 6.1 years lower for men and 5.5 years lower for women in the most deprived areas of Hillingdon than in the least deprived areas.

Hillingdon is the second largest of London's 32 boroughs covering an area of 42 square miles.

Hillingdon is ranked 23 out of 33 London boroughs for deprivation in London (including City of London) and 138 out of 326 Local Authorities in England (1 being the most deprived)
Source: DCLG 2010 Indices of Multiple Deprivation.

The population of Hillingdon has a different age structure when compared with London. In general, Hillingdon has a higher proportion of 5-19 and 50+ year olds, but a smaller proportion of 25-39 year olds. In London 55% of the population are from Black and minority ethnic (BME) communities; in Hillingdon 48% of the population are from BME communities.

Hillingdon's male life expectancy from birth is 80.5 and female is 83.7 (based on 2013-15 data), which means that a baby born in Hillingdon can expect to live a similar number of years as the England average for both genders (79.5 and 83.1 respectively).

According to the Greater London Authority in 2017, in Hillingdon, 43.2% of the population are White British, 9.9% are White Other and 46.9% are from Black & Minority Ethnic groups (source: GLA 2015 Round Demographic Projections, 2016).

The Greater London Authority 2012 Round Final Ethnic Group projection figures (GLA EGRP 2012) for 2015 estimate that Hillingdon is becoming more diverse with Black and Minority Ethnic (BAME) groups accounting for 45% of the usual resident population and White ethnic groups accounting for 55% of the population in 2015.

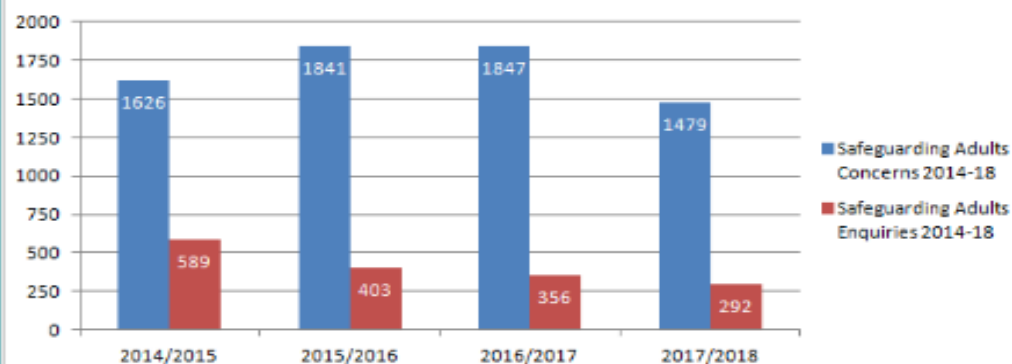
Safeguarding Adults Performance Data

Safeguarding Adults Report: 2017-18

Safeguarding Adult Concerns by Age



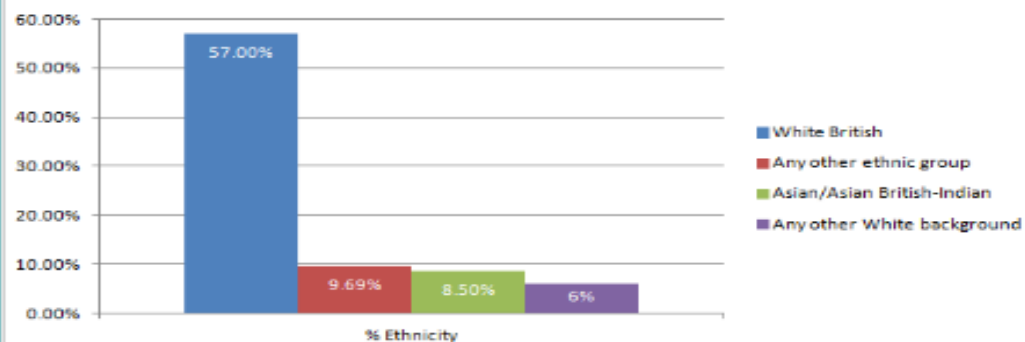
Safeguarding Adults Concerns vs Enquiries - 2017/18



Safeguarding Adult Concerns by Gender



Adult Services Referrals by Ethnicity 2017/18

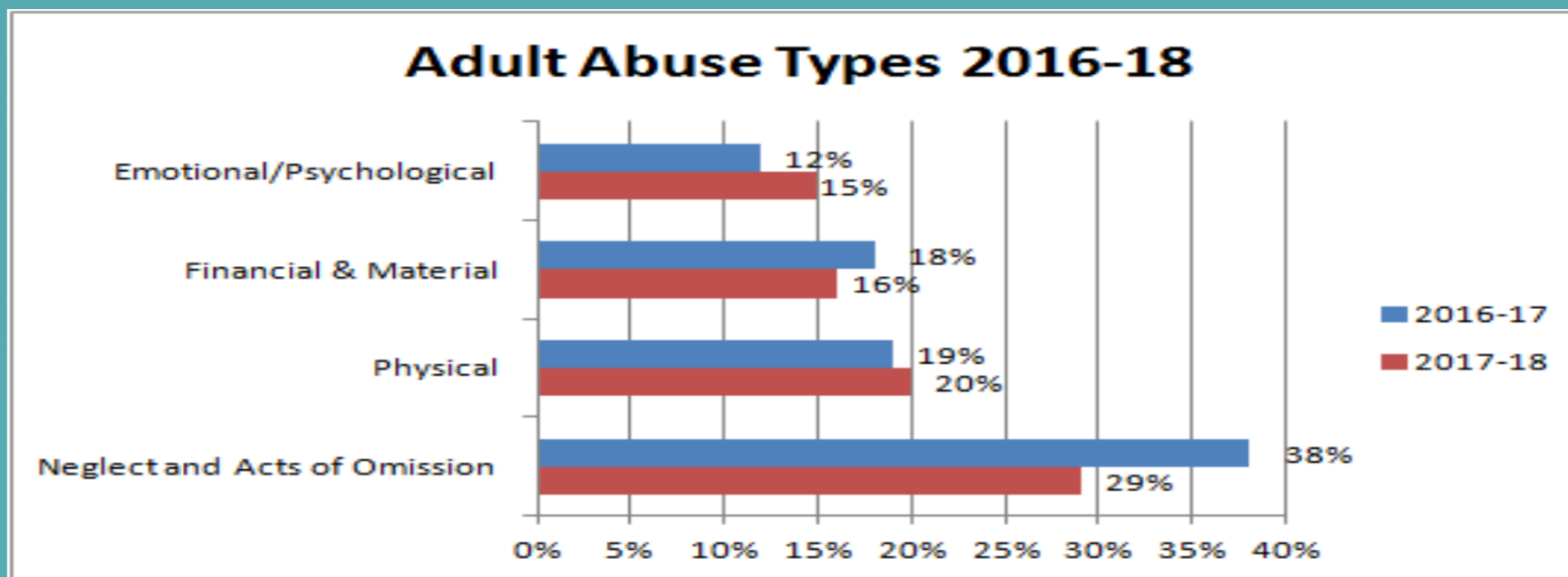


(Four most prevalent ethnic backgrounds reported in 2017-18)

Safeguarding Adults Performance Data

Reported Safeguarding Concerns

The graph below outlines the four most common types of abuse reported to Adult Services in both 2016-17 and 2017-18. Considerable consistency is seen across all abuse types, except 'Neglect & Acts of Omission', which decreased almost 10% in 2017-18. An increase is seen in the rate of reported Financial & Material Abuse.



Safeguarding Adults Performance Data

s.42 Safeguarding Enquiries

s.42 Safeguarding Enquiries are undertaken when -

- an adult has needs for care AND support;
- adult is experiencing, or is at risk of, abuse or neglect;
- As a result of those needs the adult is unable to protect himself or herself against the abuse or neglect, or the risk of abuse or neglect.

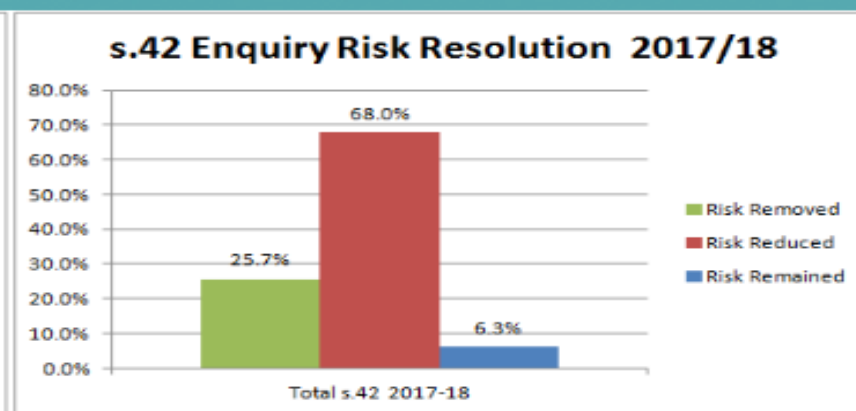
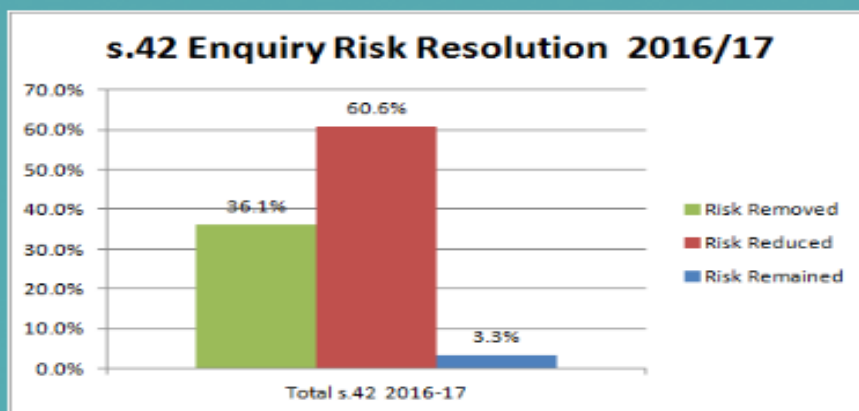


The largest proportion of s.42 Safeguarding Enquiries are consistently generated by concerns about a vulnerable adult suffering from neglect or acts of omission occasioning neglect, although as with wider adult safeguarding concerns, a decrease of over 7% has been observed in the 2017-18 year. Neglect, Financial & Material Abuse and Physical Abuse combined to comprise over 70% of s.42 Safeguarding Enquiries in 2017-18, down from almost 80% in the previous year. An increase in s.42 Safeguarding Enquiries regarding psychological abuse occurred in 2017-18.

Safeguarding Adults Performance Data



In 2017-18, over 80% of s.42 enquiries led to a safeguarding risk being identified and action taken to enhance the safety and well-being of vulnerable adults in Hillingdon.



s.42 Safeguarding Enquiries concluded in Hillingdon have consistently led to the reduction and removal of risk to vulnerable adults. In 2017-18, there was a small increase in concluded s.42 Safeguarding Enquiries where risk remained, however over 90% of enquiries led to the removal or reduction of safeguarding risk to adults.

Safeguarding Adults Training

Standardised training across the health and social care system is key to promoting good evidenced based care. The aim of training is to prevent safeguarding concerns arising and to ensure that they are appropriately dealt with when they arise.

The Hillingdon Safeguarding Adult Board is working hard to ensure that providers of services to some of the most vulnerable people in Hillingdon are equipped to deal with the challenges which are presented to them effectively.

Links across the whole health and social care system in terms of training is imperative to support good outcomes for vulnerable people in Hillingdon.

A proposal was previously presented to the partners of Hillingdon Safeguarding Adult Board to outline the contributions which would be required to develop a training programme. Whilst partners thought a standardised programme was a good idea, most partners wanted to pay for training when they required it rather than be part of an ongoing programme.

Some funding has now been agreed with Hillingdon CCG and The London Borough of Hillingdon, which will enable a revised training programme to commence. This will include training that would be available for care home staff in relation to the Accountable Care Partnership. The training for care home staff is intended to support good practice and prevent adult safeguarding concerns from arising, in keeping with the principle of prevention that is central to The Care Act.

The Plan is to provide a training programme for the year similar to the Local Safeguarding Children's Board.

Hillingdon Safeguarding Adults Board Statutory Partners' Contribution to Priorities 2017 - 2018

Adult Social Care: The London Borough of Hillingdon

In September 2017, the Council developed the Adult Social Care (ASC) Triage Team. Working closely with the MASH (Multi Agency Safeguarding Hub), the role of ASC Triage Team is to provide a robust and consistent response to all adult safeguarding concerns. The team dealt with 1479 Safeguarding concerns during 2017/18.

Of the concerns received in 2017/2018, 247 progressed to Section 42 enquiries. Making Safeguarding Personal remains central to practice, with 93% of people saying that their outcomes were met. Over 90% of Section 42 enquiries resulted in the assessed risk being reduced or removed.

Linking in with the Care Quality Commission (CQC), the Council's Quality Assurance Team continues to work with providers to monitor and improve standards and promote good practice. The Social Work teams work closely with the Quality Assurance Team and Hillingdon CCG to feed into the Council's Care Governance framework. A provider forum was also held in November 2017, which was well attended by over 100 care and support providers.

The Council is also taking a lead role in redesigning the current hospital discharge pathway in partnership with Hillingdon CCG, The Hillingdon Hospital and CNWL, to expedite safer and timely discharges.

Adult Social Care continues to meet the challenge of a rising demand for Deprivation of Liberty Safeguards (DoLS), with a projected 1450 applications being dealt with this year. For every assessment, the focus is on the resident, their voice, their family and friends' voices and ensuring that these are central to the DoLS process. Adult Social Care offer formal advocacy for all residents, either for them directly or for their family or friends if they are befriended.

In relation to cases submitted to the Court of Protection, the Council's Legal team has been complimentary about the quality of work particularly with regard to the Social Workers' witness statements.

Adult Social Care continues to train and support in-house Best Interests Assessors (BIA) by way of accredited BIA training, refresher training and a regular BIA Forum.

The Council has delivered a wide range of training covering Safeguarding (for Enquirers and Safeguarding Adults Managers); DoLS and Best Interest Assessments; Domestic Abuse; Mental Capacity Act and Modern Day Slavery.

Hillingdon Safeguarding Adults Board Statutory Partners' Contribution to Priorities 2017 - 2018

The Metropolitan Police

There have been no inspections in the reporting period for this report. However a review of 'Hillingdon Police Vulnerable Adult Safeguarding Arrangements' has taken place and a report will be published shortly.

In addition to the increase in staffing levels and prioritisation of adult safeguarding by Hillingdon Police, a number of reforms to systems and processes are underway. Previously no system existed whereby Vulnerable Adult (VA) crimes were triaged, risk assessed or allocated to relevant departments. VA crimes were spread across the whole Police Criminal Investigation Department (CID) remit. Changes are currently being implemented following an internal review will address these issues and an investigator with relevant experience will be assigned. This work is still in progress, but follows an ethos of continuous improvement and self analysis.

As a result of training and intervention from Police MASH, Heathrow stakeholders have moved safeguarding to a higher priority within their byelaws so that safeguarding is considered first prior to any lawful ejection of an individual from Heathrow Airport.

The implementation of social services safeguarding team has improved communication and collaboration between partners and enabled a report of wrongdoing to be dealt with promptly. As a result of training and intervention from Police MASH, an elderly lady who was being groomed for her money and property was promptly safeguarded and the perpetrator, who was in a position of trust, has been subject to discipline procedures, which resulted in dismissal.

It needs to be highlighted that Hillingdon Borough police are due to merge with Hounslow and Ealing Borough Police which will inevitably require some changes to the current systems of all three Boroughs and a standardisation of approach may well result.

Hillingdon Safeguarding Adults Board Statutory Partners' Contribution to Priorities 2017 - 2018

Adult Safeguarding NHS Hillingdon Clinical Commissioning Group (CCG)

During 2017/18, the Care Act 2014 has been further embedded within practice. There have been closer working partnerships with the statutory body for Adult Safeguarding (the London Borough of Hillingdon) and Hillingdon CCG. For example, supporting good practice within care homes and addressing adult safeguarding concerns.

The Designated Safeguarding Adult Nurse has also:

- Led on a number of Section 42 adult safeguarding enquiries;
- Supported the Accountable Care Partnership (ACP) for Older People Model of Care.
- Been appointed as the Vice Chair to the Adult Safeguarding Board and is supporting the development of a training programme.
- Led on the action plan for the Domestic Homicide Review Case of 'Charlotte'. The lessons learnt continue to be embedded in practice and developed further.
- Participated in a number of The London Borough of Hillingdon subgroups to develop the Domestic Violence and Abuse Strategy for Hillingdon.
- Attended the Multiagency Risk Assessment Conference (MARAC) meetings on a monthly basis.
- Integrated into the Channel Panel meetings, providing updates on lessons learnt for CCG staff and working with primary care to develop resources for practices. Prevent has also been an area of advancement over the last year.

Hillingdon CCG has been working with NHS England to develop a Mental Capacity Act Template for GPs to use when making a Mental Capacity Act assessment. This is now in the pilot phase.

Hillingdon CCG have continued to monitor providers with the completion of the Safeguarding Health Outcomes Framework. They have worked collaboratively with Continuing Health Care staff and instigated NHS Provider lead groups and GP Practice leads group, in order to progress good practice further and devise solutions to difficult adult safeguarding situations.

Hillingdon Safeguarding Adults Board Statutory Partners' Contribution to Priorities 2017 - 2018

Adult Safeguarding NHS Hillingdon Clinical Commissioning Group (CCG)

During the past year, CCGs have been taking the lead role for the LeDeR programme within their areas which is as advised by the University of Bristol as:

'The Learning Disabilities Mortality Review (LeDeR) Programme aims to make improvements to the lives of people with learning disabilities. It clarifies any potentially modifiable factors associated with a person's death, and works to ensure that these are not repeated elsewhere.'

The Designated Nurse is the Local Area Contact (LAC) for the reviews. The LAC allocates all the reviews. The Terms of Reference has been agreed and the steering group has now had two formal meetings and provides reports into the Safeguarding Adults Board.

Hillingdon SAB & Partner Agencies Summary of Achievements

"Peer Reviews are well established and take place twice a month. Safeguarding Adult Lead".

CNWL NHS Foundation Trust

"Prevent Event training – we are on target to meet the 85% compliance set by NHS England by the end of March 2018. In HCH 84% of staff are trained and in MH it is 77%."

CNWL NHS Foundation Trust

"Monthly Hillingdon safeguarding Meetings held at the Civic Centre is well established and provides an opportunity for CNWL to meet with LBH regarding safeguarding adults, and for us to give assurance to LBH as to how we manage our safeguarding adults under the section 75 agreement."

CNWL NHS Foundation Trust

"Safeguarding training is mandatory for all staff and is regularly updated. Staff more aware of issues around safeguarding and how to report them. Safeguarding is a board agenda item. Now have a lead safeguarding trustee who has undergone training."

Hillingdon Carers

Hillingdon SAB & Partner Agencies Summary of Achievements

"Updated CNWL Domestic Abuse Protocol released in August 2017. In this it stresses that staff need to routinely ask about DA for every female service user. Selective enquiry should be undertaken with all male service users presenting with indicators of abuse. This is also in accordance with NICE guidance. We plan to get a DA template added on to SystemOne (new electronic record keeping) so that this information is captured across the borough for all service users."

CNWL NHS Foundation Trust

"The LFB has an adult safeguarding policy. LFB staff have received safeguarding training in the last twelve months. The LFB may need to consider providing modern day slavery, sexual exploitation and domestic abuse awareness for frontline operational staff in the borough. LFB engage in joint action days with the Met Police and partners with LFB safety officers and operational crew."

London Fire Brigade

Hillingdon SAB & Partner Agencies Summary of Achievements

"Prevent awareness training is delivered as part of mandatory adult safeguarding training, which is every three years. A train the trainer day was facilitated by the NHSE (London) Prevent lead for WRAP training. Twenty trust staff attended the training event which was well received. The percentage of eligible staff trained thereafter has significantly increased. The Trust is therefore actively working towards the target of 85% compliance. On-line training will also be made available".

The Hillingdon Hospital

"Trust Safeguarding Arrangements: The Executive Lead for Safeguarding Adults is the Executive Director of Patient Experience and Nursing, who is supported by the Deputy Nurse Director. There is a Head of Safeguarding Adults in post (RN), who is supported by the Safeguarding Administrator and Clinical Lead for Safeguarding (Elderly Care Consultant who performs this task as part of his role). The Trust works collaboratively with LBH to safeguard adults, actively engaging in the raft of strategic and operational meetings to address issues and improve services".

The Hillingdon Hospital

"MCA and DoLS: There is a continuous drive to robustly implement and improve the understanding of MCA and DoLS throughout the trust. This includes:

- Regular enhanced (Level 2) training for MCA and DoLS for identified trust staff.
- Monthly Nurse Induction sessions on MCA and DoLS and processes.
- Regular ward visits to assist staff in the application of MCA and DoLS in practice.
- The recent introduction of DoLS logs across all wards to ensure consistent approach.
- Strengthening of central database to track DoLS applications and authorisations.
- DoLS care plans to support nursing staff in practicing safe patient care in relation to DoLS".

The Hillingdon Hospital

Hillingdon SAB & Partner Agencies Summary of Achievement

Domestic Abuse Steering Executive

- In Hillingdon we are all too aware of the devastating consequences of domestic abuse and other forms of violence and abuse on victims and their children. On average there are in excess of 5000 domestic abuse crime and incidents recorded by the police in Hillingdon. Many more go un-reported. Tragically, the domestic abuse crime statistics also relate to 16/17 year olds who are in intimate partner abusive relationship too.
- The number of high risk domestic abuse cases being managed by the Domestic Abuse Multi-Agency Risk Assessment Conference (DA MARAC) has been increasing. In the last 12 months 329 cases (and increasing) have been referred to DA MARAC and at least 484 children have been part of those abusive households.
- A re-juvenated and re-focused Domestic Abuse Steering Executive is providing the governance, direction and leadership to preventing and tackling the many crimes and abuses associated with Violence Against Women and Girls including Domestic Abuse, Modern Day Slavery, Honour Based Abuse, Forced Marriage, Female Genital Mutilation, Sexual Violence and Stalking. This strategic group is supported by 5 operational delivery groups made up of a diverse range of local professionals who will soon be supported by independent members from the local community.

Hillingdon SAB & Partner Agencies Summary of Achievements

Domestic Abuse Steering Executive

The Steering Executive has developed an inclusive Domestic Abuse Strategy 2018 - 2021, which incorporates Violence Against Women and Girls. The DA Steering Executive has set out its Vision as;

'To preventing and eradicating all forms of violence and abuse against women, children and men in Hillingdon Borough and support those so victimised to achieve their full potential in life'.

The work towards achieving this vision is underpinned by the 4 key priorities of;

1. Prevention and Early Intervention
2. Service Provision
3. Pursuing Perpetrators
4. Partnership Working

We have worked hard to listen to victims and survivors of domestic abuse and local statutory and voluntary sector professionals. This has allowed us to better shape:

- Our responses to domestic abuse
- Our understanding of the whole range of organisations and agencies providing support to victims/survivors and their children
- Our services to prevent domestic abuse and ensure early intervention to prevent the abuse worsening
- Our training provision to local multi-agency statutory and voluntary sector professionals
 - In the last years we have had 7 multi-agency training events focussed on domestic abuse and the wider subject of Violence Against Women and Girls, which has seen in excess of 430 professionals trained.
 - It is great to see that this cycle of regular training will continue.

London Borough of Hillingdon Adult Social Care Feedback

Making Safeguarding Personal is a key area of focus within Adult Social Care and the feedback from Service Users, Carers and staff alike is that it has been vital in capturing the voice of the adult and his/her representative.

One example is that of 35 year old Mr A, who was referred to Social Services upon disclosing threatening behaviour from an associate he had met through friends. The associate had begun to involve Mr A in taking cocaine and drinking, had begun to take over his flat and invite other drug users over the property. He restricted access in and out of the flat and became threatening when asked to leave by Mr A and his sister. Due to fear, Mr A was not able to return to this flat or the area.

Mr A was housed on an urgent basis in a Social Care commissioned step down flat. Through multi agency working with the Police and Housing colleagues, Mr A was successfully granted a management transfer by the Housing panel. Mr A was supported to bid for properties and was successful in quickly securing an ideal property which was ground floor and fully adapted. Mr A now lives nearer his sister. His overall mood significantly improved during the course of the enquiry and this was noted by all professionals and family members. Mr A and his sister were extremely happy with the outcome of the safeguarding enquiry and are optimistic about the future.

Another example is the case of a lady in her late 70s suffering with advanced dementia. She had a physical altercation with another dementia Service User that caused for her to sustain a broken hip. On investigation it was found that the service provider was unable to meet her needs any longer, but they had failed to review her needs and seek appropriate help. In relation to their experience of the Safeguarding process, the family were very grateful that somebody took the time to listen to what they had to say.

Safeguarding Adults Review

Section 44 of the Care Act 2014 places a duty on Safeguarding Adults Boards to arrange a Safeguarding Adults Review (SAR) in cases where an adult has died or experienced significant harm or neglect. In Hillingdon there is currently 1 SAR in the process of being conducted.

The Purpose of the SAR is to:

- Establish what lessons are to be learnt from a particular case in which professionals and organisations work together to safeguard and promote the welfare of adults at risk.
- Identify what is expected to change as a result, to improve practice.
- Improve intra-agency working to better safeguard adults at risk.
- Review the effectiveness of procedures, both multi-agency and those of individual organisations.

On conclusion of the SAR, an action plan will be drawn up to ensure that the recommendations of the findings are implemented. The Executive summary of each SAR and the full report will be available on the Safeguarding Adults Board website.

Safeguarding Adult Review (SAR)

Hillingdon Safeguarding Adults Board (SAB) commissioned the above SAR in January 2017. The report explores the care and treatment provided to two co-tenants, AB and CD, who shared a house for seven months, until CD stabbed AB to death in the house in November 2015.

AB was not receiving any services from either the local authority or the mental health trust. CD, however, had been known to the mental health trust for two and a half years, and had been admitted to psychiatric hospital twice during that time, the first admission lasting 19 months. He was subject to the Care Programme Approach (CPA) and had a care coordinator from the community mental health team throughout that time.

CD stabbed AB to death on 10 or 11 November 2015 at their accommodation, and has subsequently been detained in secure hospital care under the auspices of the Mental Health Act 1983.

Concerns arising from SAR:

- Housing allocation decision making
- Ongoing hostility between co-tenants
- Changes in staffing and handover process
- Inter-agency and inter-professional communication

Hillingdon Safeguarding Adults Board Priorities 2018 - 2019

Modern Day Slavery

Ensure professionals and public are aware of Modern day Slavery and work closely with agencies to eradicate it through guidance and robust referral mechanisms.

Domestic Abuse

Support the Domestic Abuse Executive in ensuring that the Domestic Abuse Strategy's aims and objectives are achieved. implemented.

Mental Capacity and Deprivation of Liberty

Ensure that good practice is embedded into service delivery, and refresher training is well attended.

Adult Grooming

To understand and map concerns, provide training to professionals and develop a referral pathway.

Adult Safeguarding Objectives

- Professionals to take a person centred and holistic approach to safeguarding.
- Advocacy for individuals who lack mental capacity or difficulty in decision making.
- Minimise repeat safeguarding issues.
- Robust risk assessment and management arrangements involving adults, their families and carers.
- Improving data analysis to measure outcomes.
- Increase engagement of the SAB with vulnerable adults.
- Ensure effective holding of agencies to account.

Good News Stories

Twitter - @HillingdonSAB

Our Twitter account can be found at the twitter-handle of @HillingdonSAB. From humble beginnings, we know have over 130 followers and counting! Swing by to catch important updates in adult safeguarding in Hillingdon and from other sources across the internet. Feel free to leave feedback about our website or any other function of the SAB via direct message.

Newsletter

That's right, the SAB has quietly resurrected its quarterly newsletter, bringing key information and developments around adult safeguarding to your inbox every 3 months. Previous editions can be found on the SAB website (see below), amongst the range of adult safeguarding information there. Got an important adult safeguarding event, training course or practice development that could be shared across the borough's safeguarding partnership? Send us a direct message on twitter or email igosling@hillingsdon.gov.uk - we will come right back to you.

SAB Website -

www.hillingdonsab.org.uk

Launched 12 months ago, the Hillingdon SAB website is being constantly updated with resources and information around adult safeguarding in the borough and wider adult safeguarding guidance. Our website has a range of helpful links and information for adults, professionals and carers around safeguarding issues, including an archive of this newsletter!

Good News Stories

Masterclass Sepsis Event

- Hillingdon SAB and Hillingdon CCG held a half-day Sepsis Awareness Event on Tuesday, 30.01.2018. This free event 'sold out' in 5 days and was an immense success, with over 120 professionals across a variety of disciplines coming to the Hillingdon Council Chamber to hear a range of expert speakers talk to the early identification, treatment and impact of Sepsis in children and older adults. Attendees included registered nurses, GP's, allied health professionals, home care providers, adult care home staff, members of the CQC Inspectorate, CNWL Deputy Director (Infection, Prevention & Control) and the Infection, Prevention & Control Lead for Hillingdon CCG, amongst many other leading figures in the field of Sepsis.
- Speakers included local GP's, paediatricians, geriatricians and updates from the National CDOP Coordinator and the NHS England Sepsis Clinical Lead. A powerful, emotive presentation was also given by Melissa Mead of the UK Sepsis Trust, who sadly lost her own 12 month old son to Sepsis in 2014.
- Sepsis has quietly overtaken the combined death toll of breast, bowel, prostate cancers and road traffic accidents combined last year - current figures suggest 44,000 people of all ages die of Sepsis each year and this is projected to rise towards 60,000 in the near future. Please be aware of Sepsis, where young children and older adults are at high risk and it can be difficult to spot amongst a range of seemingly innocuous symptoms.
- Feedback from attendees on the day was overwhelmingly positive; given the success of the event, planning is underway to repeat the process by June 2018 - keep an eye on this newsletter or www.hillingdonsab.org.uk for more information!

Feedback from the Sepsis Training:

"Great to hear a parent's view, moving, sad and inspirational. Her story really hit home and I will remember it forever."

"Would have liked the event to have been a full day."

"Fantastic explanation of the symptoms to look for."

Glossary

Acronym	Meaning
MARAC	Multi Agency Risk Assessment Conference
SAB	Safeguarding Adults Board
SAR	Serious Adult Reviews
MASH	Multi Agency Safeguarding Hub
CNWL	Central & North West London (Trust)
DoLs	Deprivation of Liberty Safeguards
LSCB	Local Safeguarding Children Board
DASH	Disablement Association Hillingdon
CCG	Clinical Commissioning Group
MAPPA	Multi Agency Public Protection arrangements
CR MARAC	Community Risk Multi Agency Risk Assessment Conference
ASC	Adult Social Care
CID	Criminal Investigation Department
DA	Domestic Abuse
ACP	Accountable Care Partnership
LeDeR	The Learning Disabilities Mortality Review
LAC	Local Area Contact
LFB	London Fire Brigade
CDOP	Child Death Overview Panel
MH	Mental Health
LBH	London Borough of Hillingdon
HCH	Hillingdon Community Health
DA	Domestic Abuse